

Prague Public Transit Inc.

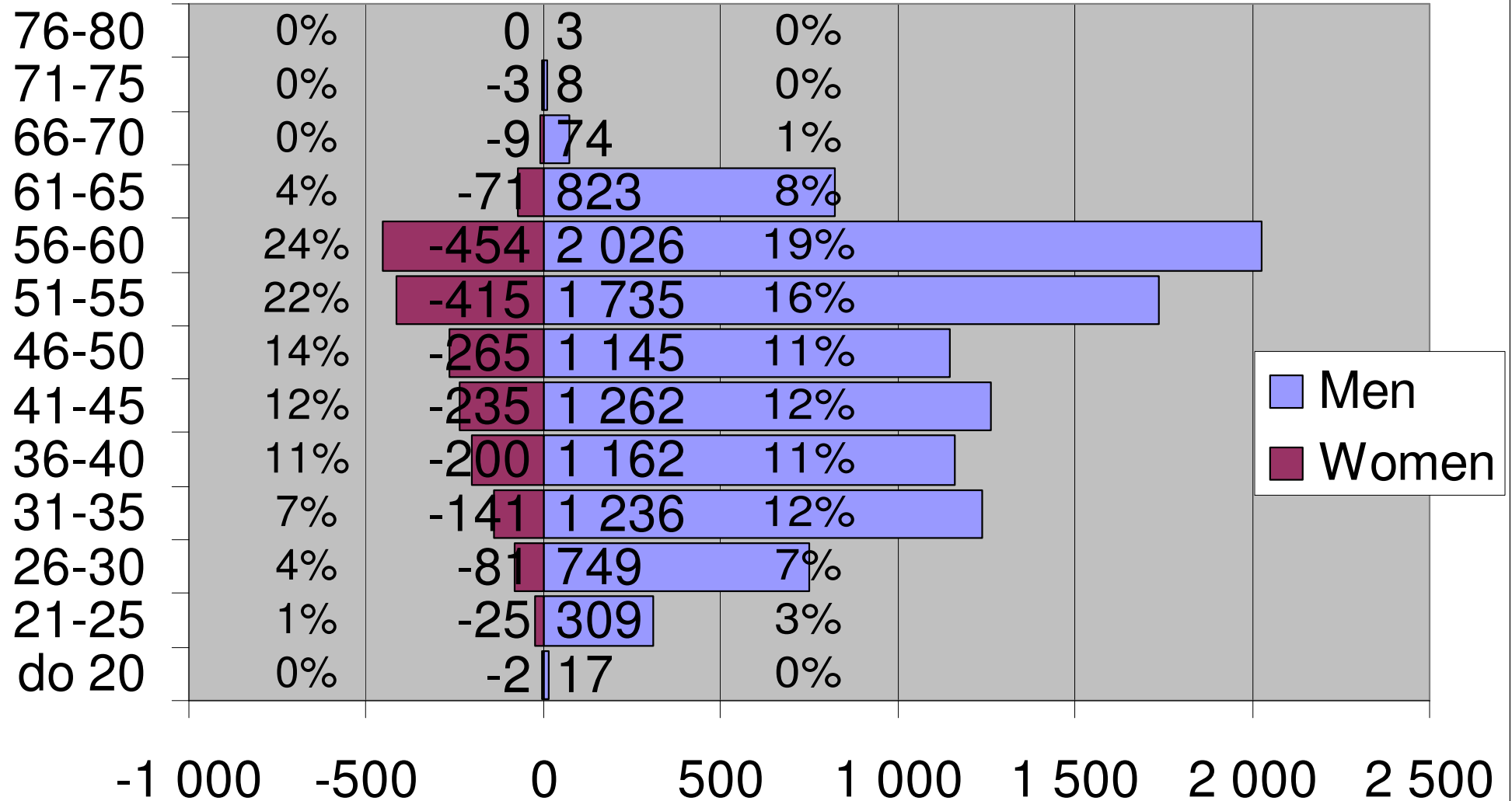
Bus operation unit

Age structure

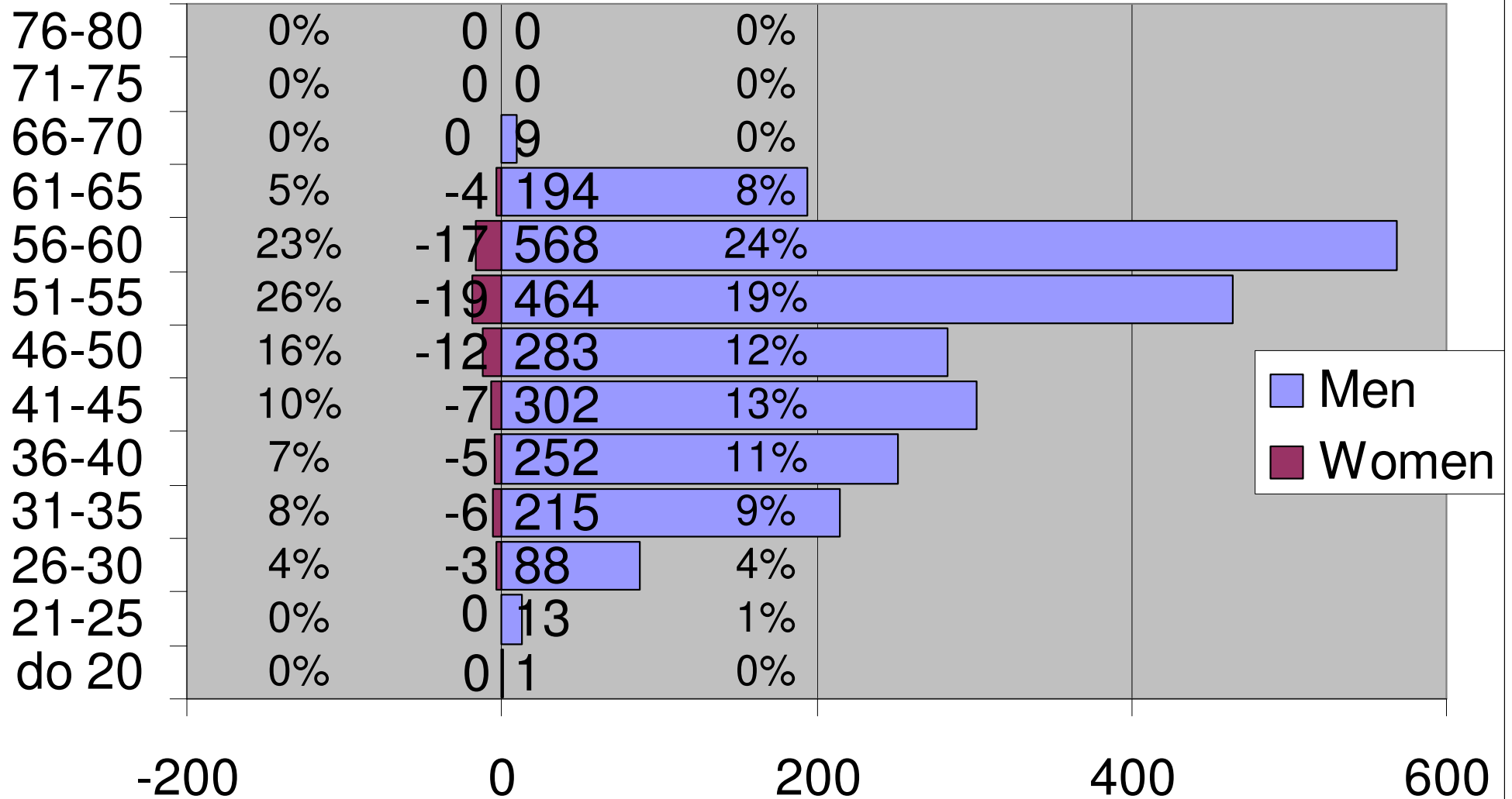
Leipzig, 18.4.2008

Jan Barchánek

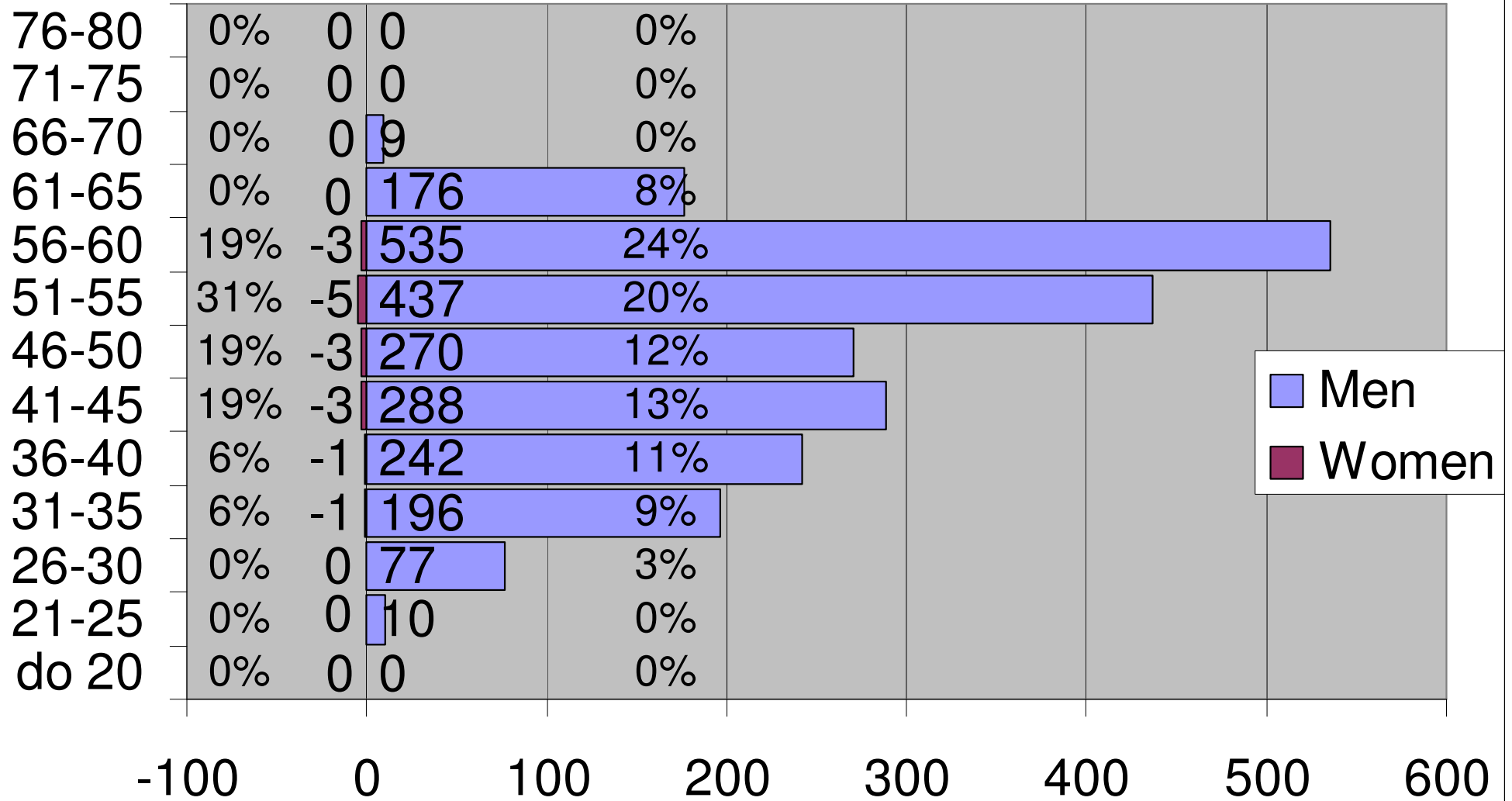
DP Praha - total (12 450 people)



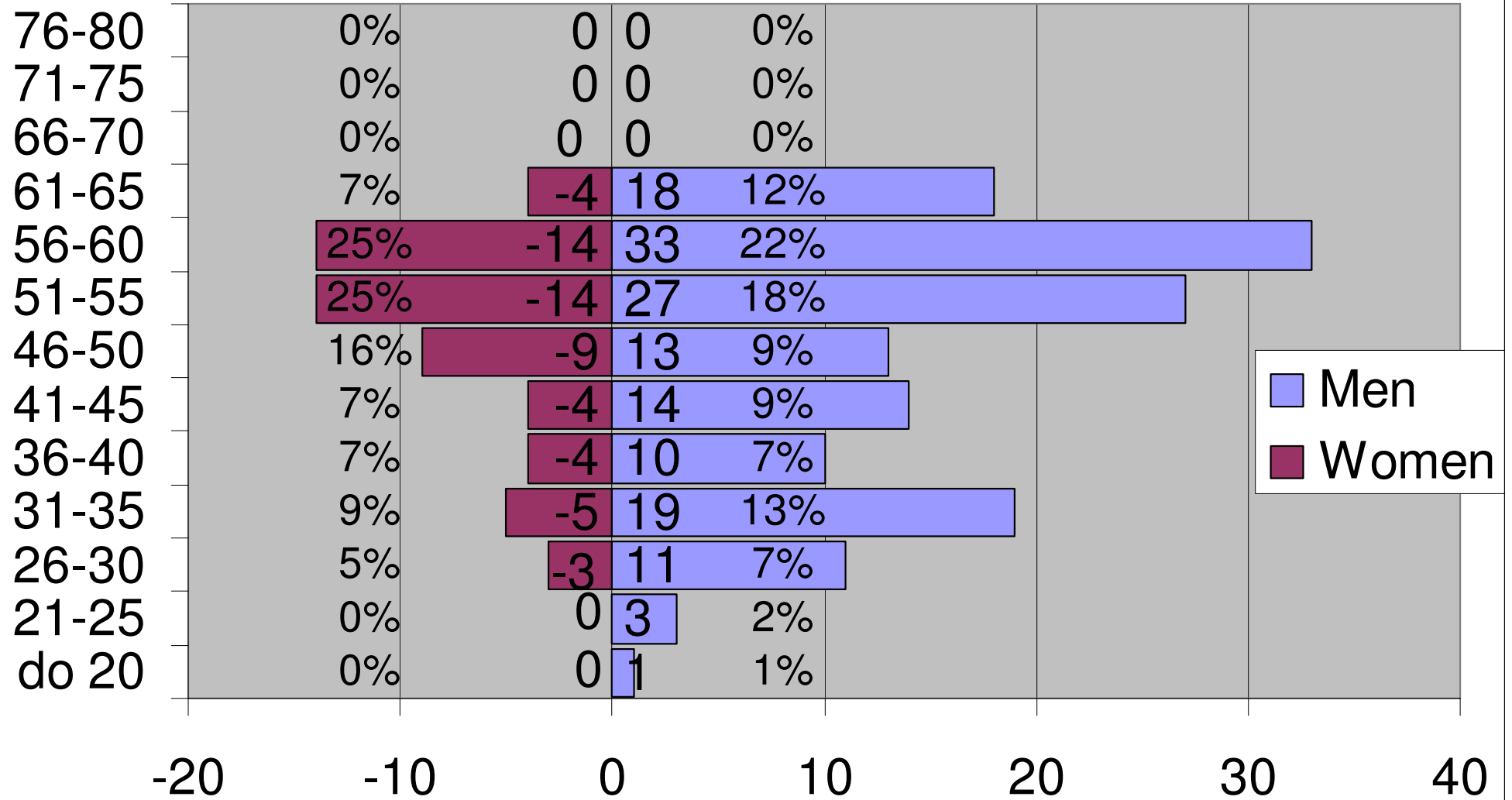
BUS operation unit - total (2 462 people)



BUS operation unit - drivers (2 256 people)



BUS operation unit - excl. drivers (206 people)



Bus drivers shortage

- Missing drivers – 140 (6 %)
- Fluctuation – 20-25 people / month (1%)
(60 % retirement, 40 % other companies)
- New drivers – need for 40 people / month
- Solution:
 - Pay for driving licence
 - Increasing salaries (2008/2007 – approx. 8%)
 - Increasing part time job
 - Change internal training programme
(communication skills, quality of service, technical skills)