

Trade World One GmbH

Presentation of the Company's Profile

*Participant during the SPUTNIC meeting in Prague on
9th – 11th October 2008: Mr. Marcus Herbers –
Purchase/Sales Dep. - TWO GmbH Düsseldorf*

Trade World One GmbH

- Company was founded in 1997 by Mr. Rainer Schieck who worked as the Director of the purchasing department
25 years with Siemens Duewag
- Members of TWO GmbH are long time members of the Railway Business – former Siemens Duewag, SAB WABCO GmbH and Faiveley Transport GmbH

Trade World One GmbH

TWO GmbH locations are in

- Germany
- India
- China

**All locations are certified in accordance to
DIN EN ISO 9001**

Trade World One GmbH

TWO GmbH is developing and distributing parts mainly for the Railway Industry. Customers are local urban and suburban passenger transport companies, OE Manufacturers as well as Service and Refurbishment Entities.

TWO is selling also second hand trams.

Trade World One GmbH

Manufacturing facilities:

TWO GmbH is manufacturing parts mainly
in

China

India

Turkey

for the Automotive Industry and OE Business.

Trade World One GmbH

All spare parts for the Railway Industry will be manufactured from companies located within Europe and all sub-suppliers are certified in accordance to DIN EN ISO 9001.

Trade World One GmbH

– Scope of Supply –



Trade World One GmbH



Glass for railway
market, automotive,
busses, caravans, etc.
laminated, tempered,
bended, heated and in
all colours

Trade World One GmbH



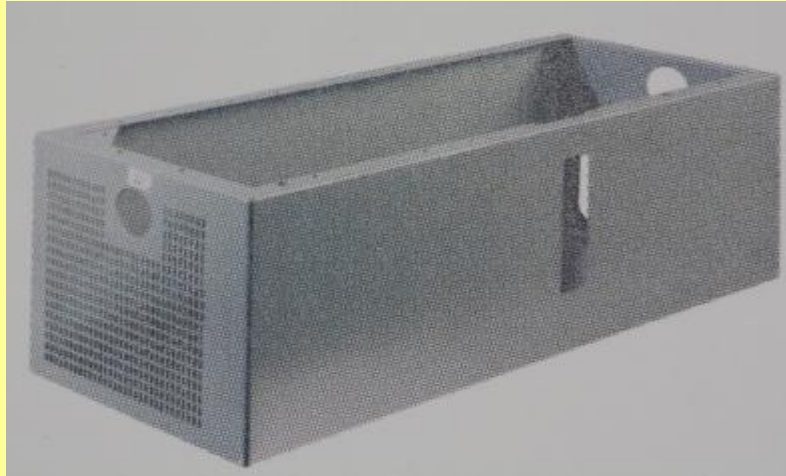
Trade World One GmbH



Stanchion-Systems

Complete with lock
furnitures and also
powder coated in
steel, alu, stainless
steel

Trade World One GmbH

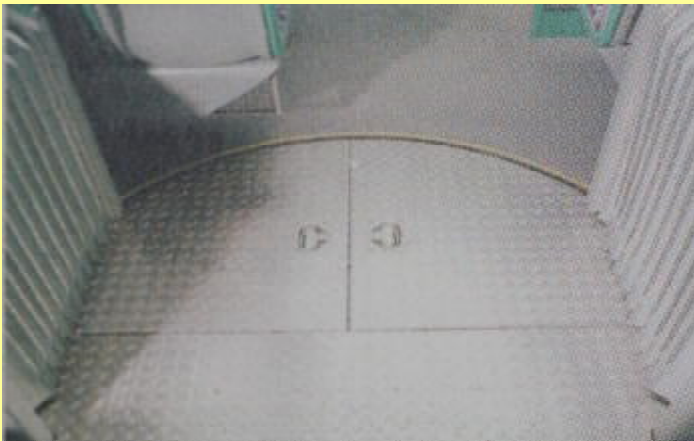
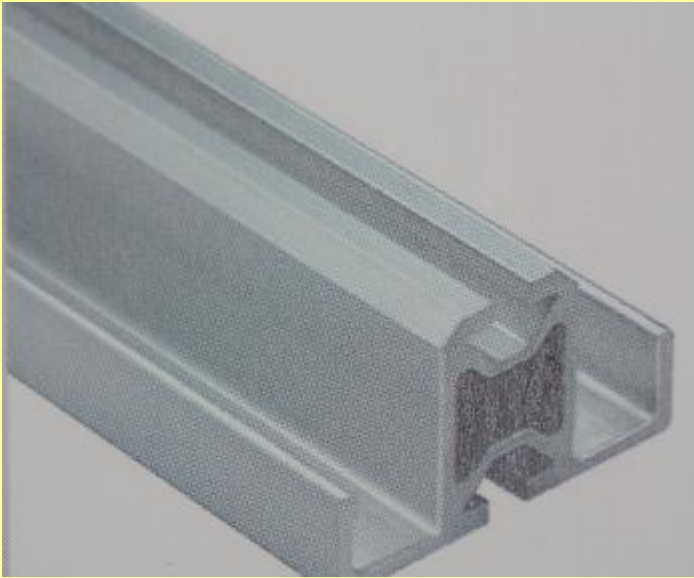


Welding
Constructions

Seat- and
sandboxes, laser
parts, punching
and pressing parts



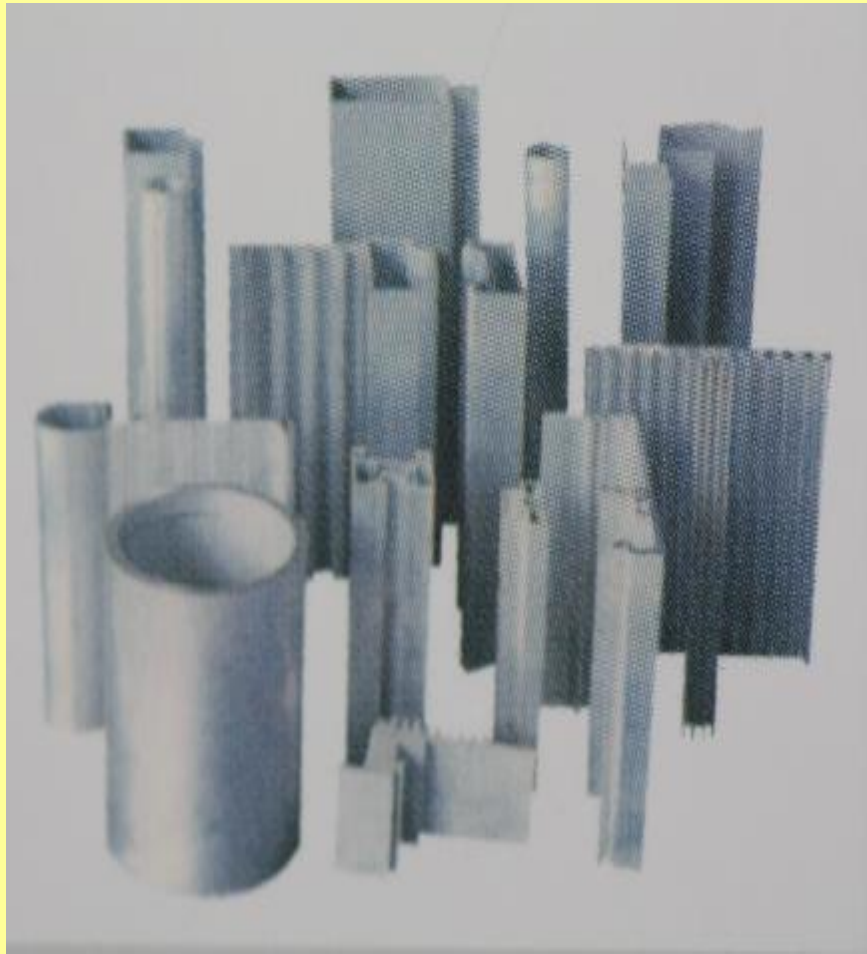
Trade World One GmbH



Aluminium extrusions
and pattern parts,

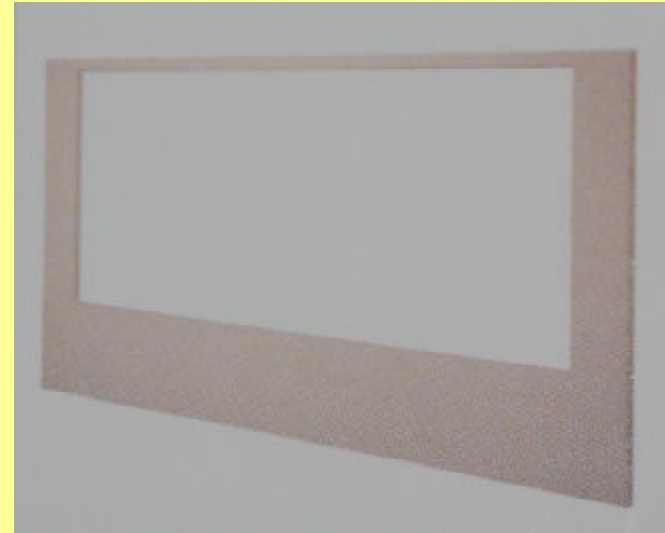
Standard quality for all
applications. Available
in mill finish, natural
kinds of powder
coating colours and
completely machined,
also bended

Trade World One GmbH



Aluminium
extrusions and
pattern parts

Trade World One GmbH

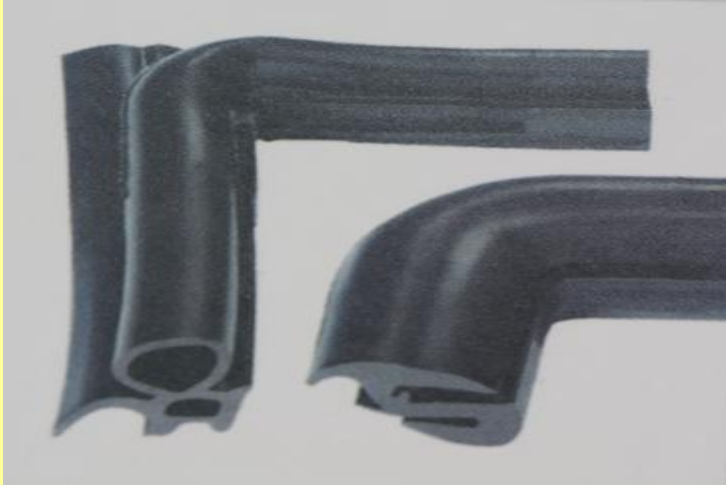


Fibre-glass parts

On the base of: fibre-glass (GFK), carbon-fibre (CFK) and aramid-fibre (AFK) with all common resin types.

All parts are handlaminated and non-flammable with German Certificates acc. to FMVSS 302 and DIN 5510 S4/SR2/ST2.

Trade World One GmbH



Rubber profiles (extrusions), hoses, sealings and pattern parts



All parts non-flammable, also with edges-vulcanisation

Trade World One GmbH

Reference list – Key Accounts:

- Siemens
- Bombardier Transportation
- Hübner
- Hymer
- Bode
- Ferrostaal

Trade World One GmbH

Reference list - Authorities:

- SWB, Bonn
- RNV, Heidelberg, Mannheim, Ludwigshafen
- Baseler Verkehrsbetriebe
- DVG, Duisburg
- Bogestra, Bochum
- EVAG, Essen
- Stadtwerke Augsburg
- KVV, Kassel

Trade World One GmbH

Reference list - Authorities:

- Stadtwerke Krefeld
- Verkehrsbetrieb Mülheim
- Verkehrsbetrieb Bielefeld
- Verkehrsbetrieb Dresden
- Verkehrsbetrieb Ulm
- Verkehrsbetrieb Halle
- Verkehrsbetrieb Erfurt
- Stadtwerke Dortmund

Trade World One GmbH

Reference list – Authorities:

- Frankfurter Verkehrsbetriebe
- Hamburger Hochbahn
- Rheinbahn, Düsseldorf
- KVB, Köln
- etc.

Trade World One GmbH

Headquarter:

Waagenstr. 32

40229 Düsseldorf

Germany

Phone: +49-211-5158170

Fax: +49-211-51581728

+49-211-51581729

E-Mail: info@trade-world-one.de