



LATVIAN EXPERIENCES WITH PSC

9 OCTOBER 2008

Prague

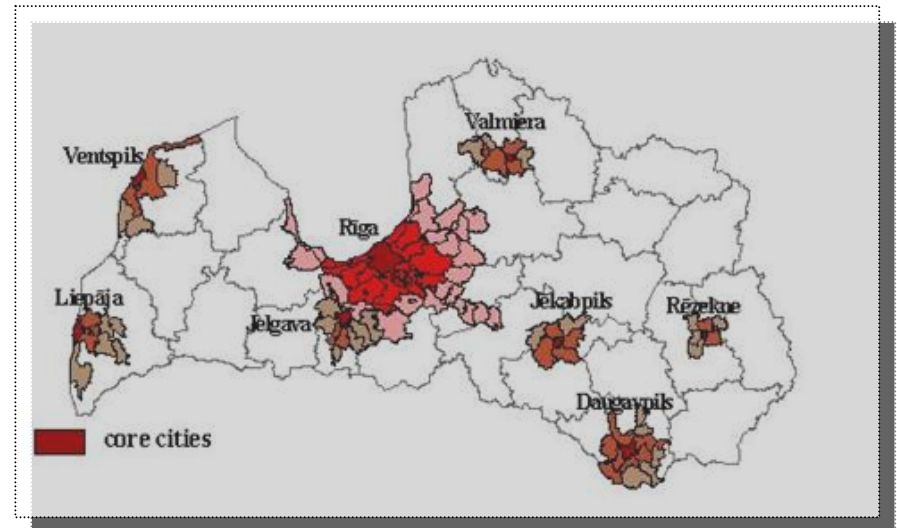
RUDITE REVELINA

RIGA CITY COUNCIL TRAFFIC DEPARTMENT



Riga – the heart of Latvia

- Riga – the capital of Latvia
- Riga - the geographical centre of the Baltic States
- Latvia - the crossroads between east and west
- 721,000 inhabitants, 1/3 of Latvia's population
- Territory: 304 sq. km
- Over 31% of motor vehicles concentrated
- 56% of all enterprises are registered in Riga



Law on Public Transport Services

- **In force as of 15 July 2007**
- **The goal of the law is to provide local residents with safe and accessible public transport services;**
- **It specifies the competence of institutions in the area of public transport;**
- **It states the rules concerning operations and organization of public transport services;**
- **It states the sources of financing and principles of financing, among other statements.**

Law on Public Transport Services

Besides the law, there have been introduced also new Regulations issued by the Cabinet of Ministers

- Regulations for the compensation of losses and costs and statement of fares in the Public Transport
- Regulations for the organization of Public Transport Services on the route network
- Regulations for the provision and use of Public Transport Services
- Regulations for the registration of bus stations, their services and organization of the bus entry and parking in the station area
- Regulations for the unified Public Transport ticket system, reservation and record keeping

Regulations about the passenger categories that can receive fare discounts in the basic routes



Law on Public Transport Services

Principles for the organization of public transport services

- Public transport services are organized in networks of routes
- The public transportation services shall be organized along basic routes and outside of basic routes
- Public transport services are organized on the basis of:
 - demand for public transport services
 - priorities in the use of public transportation

Law on Public Transport Services

- A network of routes shall be established to satisfy public demand for public transportation services
- A basic network of routes shall be ensured by ensuring:
 - 1) in transportation of urban importance:
 - links between the city centre and neighbourhoods;
 - links among the districts of the city;
 - 2) in transportation of regional local importance:
 - links between a parish centre and the relevant district centre
 - links among proximate parish centres

Law on Public Transport Services

Boundaries of networks of routes

- When a republican status city routes involves travel outside the administrative boundaries of such city, its local government and the district's government shall conclude an agreement on the boundaries of the network of routes
- The local government of the City of Riga and of the Riga district concluded an agreement stating that city routes traveling 15 kilometres outside the administrative territory of the City of Riga are considered as city routes.

Law on Public Transport Services

Procedure for organizing public transport services

- Public transport services shall be organized by granting rights or assigning duties to provide public transport services
- The state or local government can order its capital enterprise to undertake the duty of providing public transport services
- The duty to provide public transport services may be assigned only with respect to basic routes

Law on Public Transport Services

Financing of public transportation services

- Losses and expenditures incurred by the provider of public transportation services shall be compensated to the said provider to full extent in accordance with the following requirements:
 - in accordance with the procedure and amount specified in Regulation No.1191/69, provided that the provider has been assigned the (duty) obligation to provide public transportation services
 - in accordance with the procedure and amount specified by the Cabinet of Ministers, provided that the transportation service provider has been granted the right to award public transportation services

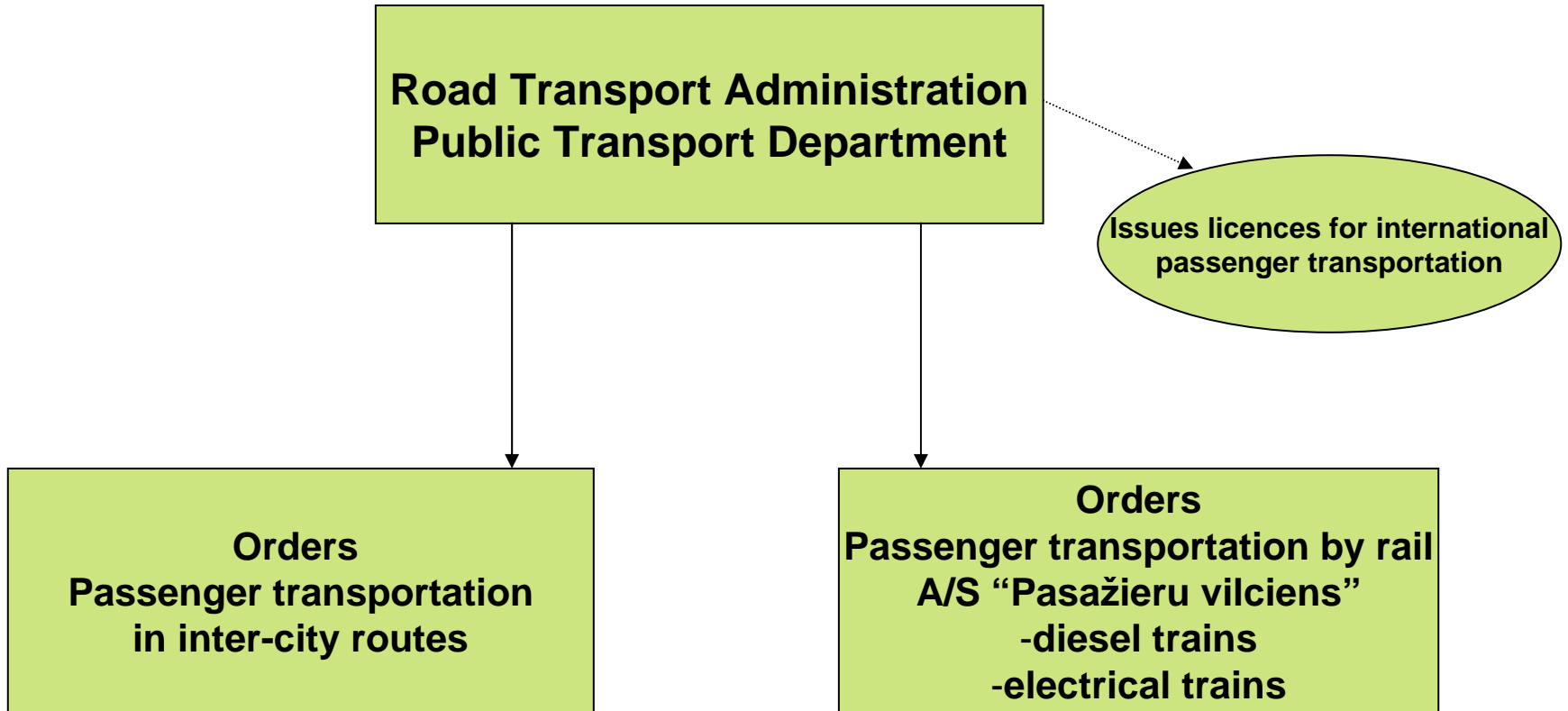


Law on Public Transport Services

Losses incurred by a public transportation service provider

- Compensation for losses incurred by the providers of PTS shall be paid:
 - in full from the national budget resources when the losses concern basic routes in a route of regionally inter-city importance or of regionally local importance
 - 35% from national budget sources and 65% from the local government budget resources when the losses concern basic routes in a network of routes of urban importance
 - in full from the local government budget resources in a network of routes of urban importance where the losses have been incurred as a result of tariffs set by the relevant local government

State level



State level

Road Transport Administration

Public Transport Department

- Organization of public transportation services in terms of regional inter-city routes in the network of routes
- Supervision of the regional inter-city routes in the network of routes
- Administration of the financing for public transportation which is received from the State budget
- Organization of all services related to public transportation

Public services contract

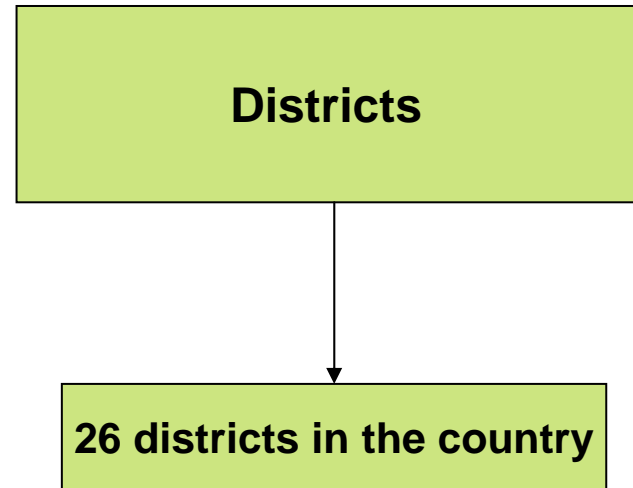
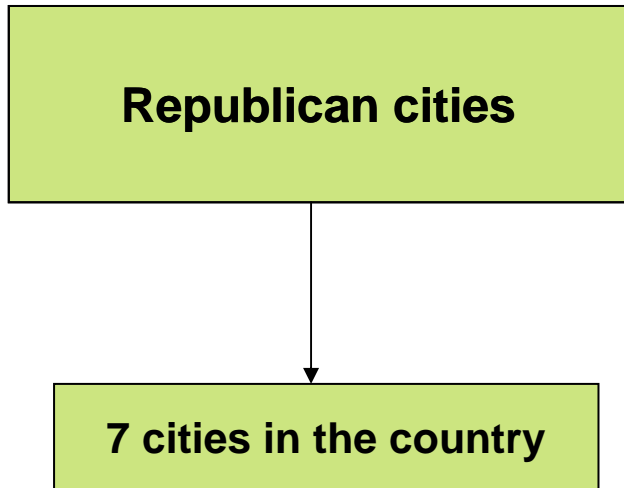
- Road Transport Administration has been signed contracts with:
 - A/S “Pasažieru vilciens”
 - Providers in inter-city routes
- Contracts in force from 1st January 2008
- Contracts shall speak to:
 - The term of the contract
 - The subject of the contract
 - Quality requirements related to the provision of services
 - Requirements related to the payment for the provision of public transportation services in a network of routes
 - Requirements concerning service fees
 - Requirements concerning monitoring of the implementation of the terms of the contract
 - Procedures for amending or abrogating the contract
 - Liabilities for failure to satisfy the terms of the contract
 - Procedures for reviewing proposals, petitions and complains from individuals and other requirements

Problems

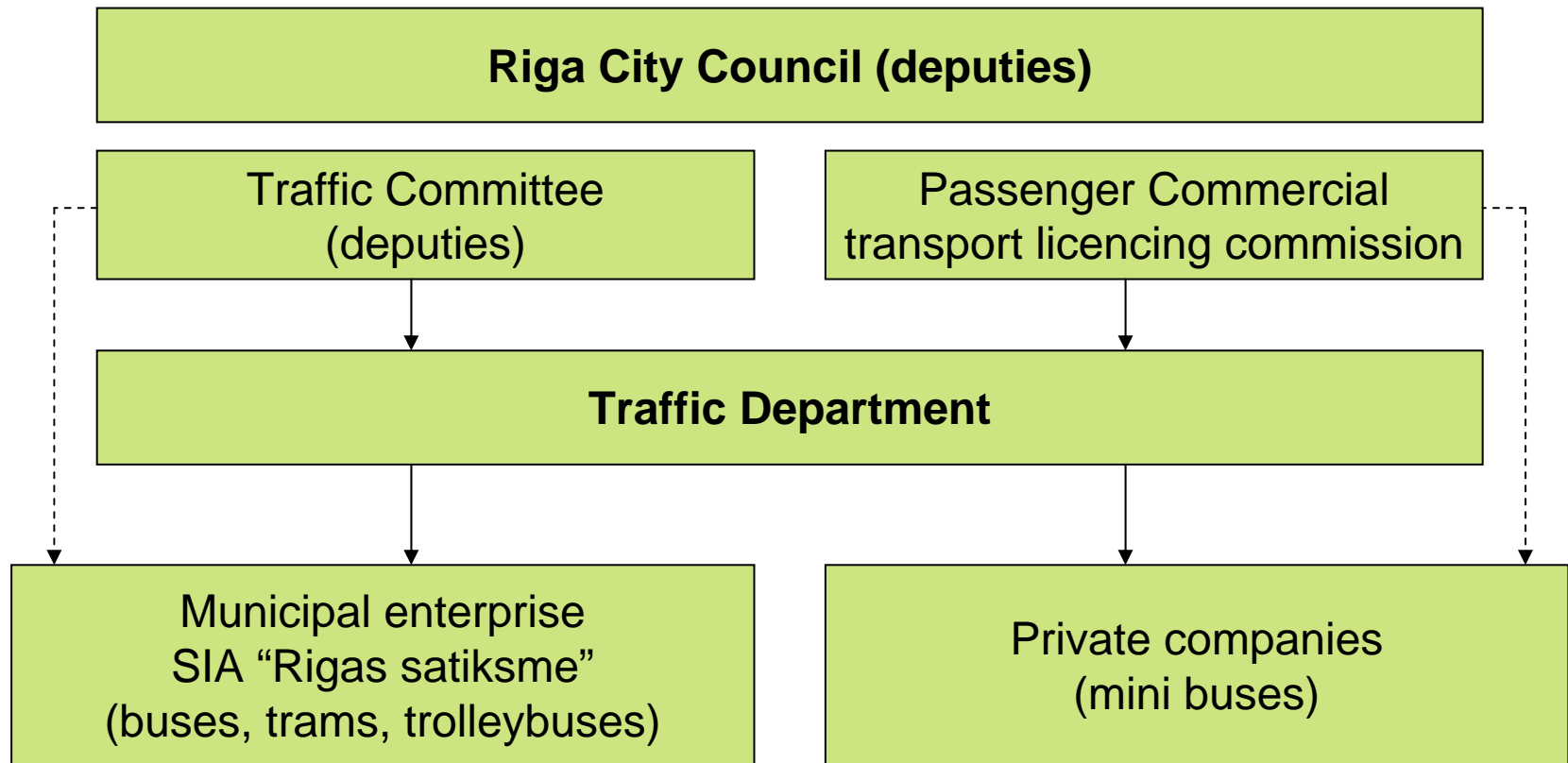
- The level of the losses in inter-city routes, routes of regional local importance, routes of urban importance higher than are meant for this purpose in the national budget
- Road Transport Administration has been changed contracts with providers in inter-city routes from 15th of September
- The number of trips in inter-city routes every day is less than 300 from 15th of September
- Tariff also has been changed



Local level



Local level



The competence of local governments of Republican cities involves

- Supervision of the municipal route network in Republican cities
- Organization of public transportation services in the local municipal route network
- Rational administration of the financial resources provided for public transportation from the State budget, local government budgets and special local government budget
- Organization of the construction of public transportation stops and maintenance of the respective infrastructure in the administrative territory of the city

The competence of local district governments involves

- Supervision of regional local routes in the network of routes
- Organisation of public transportation services on regional local routes in the networks of routes
- Rational administration of the financial resources provided for public transportation from the State budget, local government budget and special local government budget

THANK YOU FOR YOUR ATTENTION!

